



LET'S TALK ABOUT

# COLOURS AND MARKINGS

AN APH CARE GUIDE

---

By Happy Quills

---

[WWW.HAPPYQUILLSRESCUEANDREHOMING.CO.UK](http://WWW.HAPPYQUILLSRESCUEANDREHOMING.CO.UK)

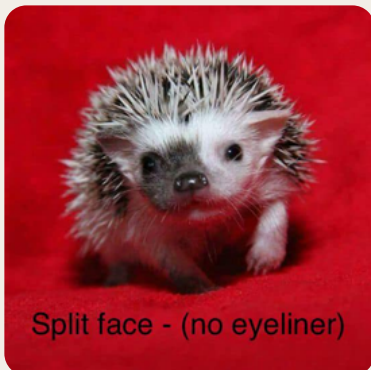
Eyeliner (Panda Eyes)



Split face - (with eyeliner)



Split face - (no eyeliner)

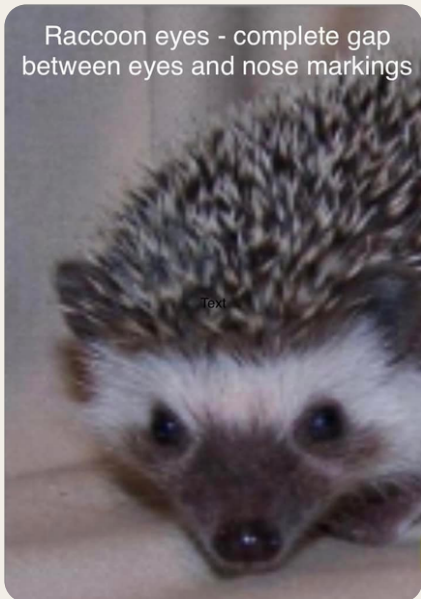
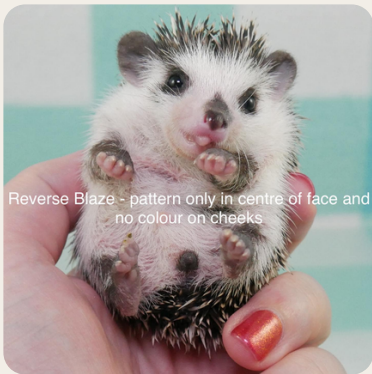


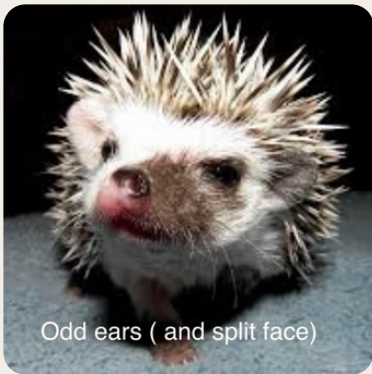
Wide Blaze - must have stripe going down to nose



Full Blaze - must have stripe going down to nose









Chocolate  
(a gingery brown colour)



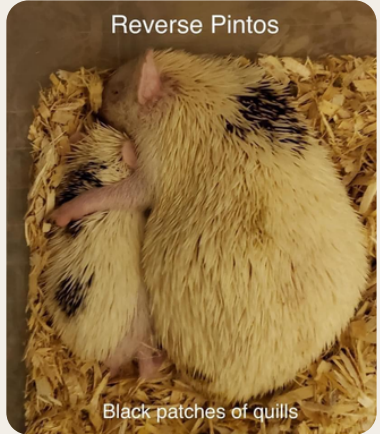
Dark Grey



Brown



Reverse Pintos



Pintos



Grey

