



LET'S TALK ABOUT

WILBUR'S WHEELS

AN APH CARE GUIDE

By Happy Quills

WWW.HAPPYQUILLSRESCUEANDREHOMING.CO.UK

APPROPRIATE WHEELS

Howdy partner, the name's Wilbur, Wylie Wilbur, and I love to Wheel.

Us hedgehogs love to run often up to 5 miles a night (not me though, Mum says I am a lazy boy) Getting the right wheel is very important for us hogs, the bigger the better to avoid spinal injuries. the most recommended wheels are bucket wheels which should be 10" -12" inches, preferably 12. Best makes are tic tac wheels (mum says these the best for us fatties as nice and wide) , Speedyhog Wheels, , Squazlehog Wheels and Carolina Storm Wheels (which can be hard to get in UK). Bucket wheels aren't cheap, but in the long run are better for health and are good value for money with all the running we do (or not do in my case)

Wrong Wheels

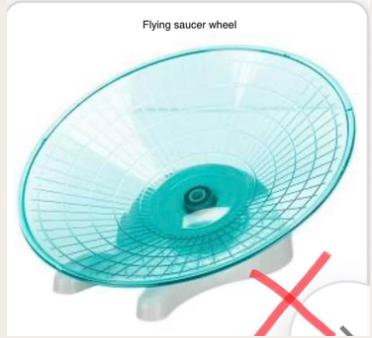
Most often recommended by pet shops is the Savic Roly wheel. Overall a fair size, but if you are an avid runner (like my brother Ink) then the ridges can cause your paws to bleed. Do you really want to hurt our precious tootsies ? Flying saucer wheels not recommended as do not offer the correct support and we can get hurt trying to dismount. There have been many incidents of Silent Runners causing foot injuries as our little paws/ nails get stuck in the part where the two colours of plastic join (always make sure your wheel is in one solid piece). Lastly the wooden wheel, this is too narrow for our running style when we grow bigger, and wooden splinters could hurt our tootsies. Plus we like to do lots of pee-wees and pewps whilst we are running, which absorbs into the wood. So if you want a stink free enclosure then a wooden wheel is not a good option.



In short a good wheel should be ideally 10-12", be a bucket wheel, have no gaps or ridges. Larger/longer hogs are better with a 14" or 16" wheel, however please ensure you measure your vivarium as some are too short height wise to fit these size wheels in.. Please be warned - it does not matter what colour wheel you buy us...by the morning it will always be 50 shades of brown.



DO NOT USE SILENT SPINNERS!



Trixie Wooden Exercise Wheel ø...



Savic Giant Rolly Wheel